

LASH LOVERS CARE INSTRUCTIONS

Lash Extensions are single strands of synthetic fiber that are applied to each eyelash, for a natural and elegant look. With proper care and fills, semi-permanent lash extensions can be permanent.

IMPORTANT

Your lash extensions should look and feel completely natural. If you experience any irritation, pinching, redness, or swelling, contact your stylist immediately so they can address and correct the problem.

TOUCH-UPS

Lash extensions typically last 3-6 weeks, depending on the growth cycle of your natural lashes, the expertise of the stylist and most importantly, how well you care for and maintain of your lashes. Fills are recommended every 2-4 weeks, depending upon the technique used. Follow the recommended care provided by your stylist.

Cancellation Policy:

All cancellations must be made at least 24 hours in advance prior to your appointment to avoid a 50% charge of the service. No shows will be charged 100% of the service.

APPOINTMENT ETIQUETTE

- Arrive early and allow ample time to check in or fill out forms. Wear comfortable clothing.

- Remove all make-up before your appointment, do not use a moisturizer. Oil based products will cause your extensions to fall out prematurely.

- Be courteous-turn off or silence your cell phone and do not bring your children

- Avoid caffeinated drinks - you will want to be relaxed. We recommend using the restroom first.

- Keep talking to a minimum since this can make the eye pads shift or brunch.

DO

- Use only oil-free makeup removers. Gently brush through your extensions with a Cleansing Brush from base to tips.

- Groom your lashes with a clean mascara wand, rolling the wand to separate and curl.

- Avoid getting your lashes wet for the first 24 hours following your appointment, this allows the adhesive to fully cure. Avoid getting your lashes wet for the first 24 hours following your appointment, this allows the adhesive to fully cure.

- If mascara is used apply only to the tips of extensions, or on your lower lashes. NEVER use waterproof mascara.

- Avoid sleeping on your face; try using protective sleep mask or pillow.

DON'T

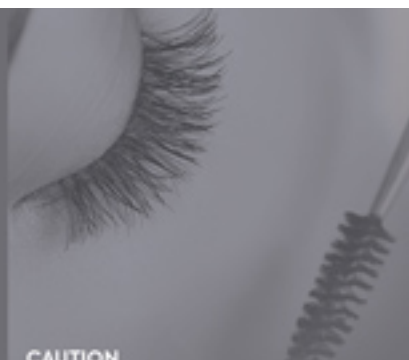
- Minimize contact! Every time you touch your lashes, you transfer oils, dirt and germs. Do not pull on your extensions, this will pull out and damage your natural lashes.

- Do not use an eyelash curler, this can cause extensions to fall off and cause damage.

- Permanent make-up must be done 6-8 weeks prior to receiving lash extensions in order to heal.

- Do not perm or tint your lashes after lash extensions are applied, this can be done a few days prior to application.

- Do not remove your lashes; this should only be done by a professional. Removal of lashes generally takes 30-45 minutes.



CAUTION

Always inform your lash stylist regarding any spa services such as laser treatments, chemical/hydroxyl peels, and/or any other treatments applied to your face, which may cause sensitivities.

LASH LOVER ESSENTIALS

We recommend the following products to care for, and protect your lashes.

- Lash oil-free cleanser & cleansing brush
- Intelliseal clear sealer
- Lash extension safe non-waterproof mascara (for classic extensions only)
- Protective Sleep Mask or Pillow
- Mascara wand brush
- Grande lash (growth serum for lashes & brows)
- Lash extension safe non-waterproof eyeliner (no gel or liquid eyeliner)